



## FireHalt® Fire Protection Products

### Recessed Luminaire Covers

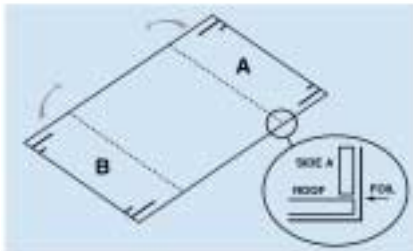
FireHalt® Luminaire covers have been developed to provide maximum protection for ceilings where fire resistant tiles have been replaced by light fittings. These covers have been designed to allow for ease of fitting. The covers incorporate ventilation slots to reduce any potential build up of heat in the light fitting.

In a fire situation the cover's intumescent materials expand to close the slots with a highly insulating fire resistant char, preventing the fire from penetrating the ceiling. The cover is unaffected by moisture and is non toxic. When the cover is in place, the modular light fitting can be installed as normal. The cover itself requires no maintenance and is easily removed for maintenance of the light fitting.

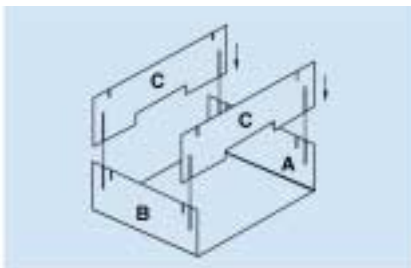
### Fitting Instructions

#### Step One

Cut through the foil covering each slot. Place main section with foil covering side face down, Fold in sides A and B so they are at 90° to the roof. Ensure the roof of the cover sits completely on the sides of the cover.



**Step Two** Insert end sections C into slots of sides A and B ensuring foil covered side is on the outside of the cover



FireHalt® Recessed Luminaire covers underwent a fire resistance test in a suspended ceiling void employing the general procedures and criteria of BS476 part 23:1987

Date of test: 19th July 2000 Duration of effective protection: 66 minutes  
Certificate no.: TE200854 Test House: BRE

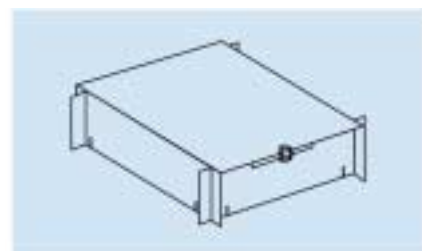


- ✓ Maintains the fire protection performance of the ceiling and prevents fire from penetrating the ceiling void
- ✓ No Clips, screws, drilling or additional support required
- ✓ Supplied as a flat pack. Simple to fix in minimal time (under 60 seconds). No special training required.
- ✓ Sizes to fit a wide range of modular fittings up to 1200 x 600mm
- ✓ Cost effective

**Step Three** Place cover over light fitting using small slots to locate over the ceiling tracks. No clips are required. These slots have been designed so that the cover rests 15mm above the lip of the rail to allow for the fitting of the ceiling tile.



**Step Four** All electrical connections can be passed through the ventilation slots D and the light fitting can be installed as normal





## FireHalt® Fire Protection Products

### Downlighter Covers

FireHalt® Downlighter covers have been developed to provide maximum protection for holes created by the introduction of a downlighter and to allow for ease of fitting. In a fire situation, the cover expands internally to fill all the available space with a fire resistant, highly insulating char.

The fire is unable to penetrate the hole and the cover gives additional insulation protection to the ceiling void by reducing the possibility of heat build up and ignition of flammables, such as accumulated dust and insulation.

#### Key Features

- Cover is Flexible and Lightweight and can be fitted from below or above the ceiling.
- Cover is ventilated to reduce heat build up in the light fitting.
- Simple fixing method; can be fitted in seconds.
- No screws, drilling or support required.
- Can be used in suspended plasterboard and concrete ceilings.
- Cost effective
- Covers a wide range of mains and low voltage downlighters.
- For thirty and 60 minute fire rated ceilings.
- Prevents fire from penetrating the ceiling void and retains ceiling's fire protection integrity.
- When exposed to fire it provides a highly insulating, stable char.
- Unaffected by moisture, and none toxic.
- Once it is installed it is free from additional maintenance.
- Once fitted, downlighter can be installed as normal



*Before Fire (cut away section)*



*After Fire (cut away section)*

Sizes Available		
O/D	Height	Cut-out Size
150	150	50 to 75
200	200	75 to 100
250	250	100 to 140

#### Test Data 1:

FireHalt® Downlighter covers underwent a fire resistance test in a suspended ceiling employing the general procedures and criteria of BS476 Part 23:1987

#### Date of test:

5th August 1999

#### Certificate No.:

FEI/F99029

#### Test Data 2:

FireHalt® Downlighter covers underwent a fire resistance test in a plasterboard ceiling employing the general procedures and criteria of BS EN 1365-2:2000

#### Date of test:

18th April 2000

#### Certificate No.:

TE94667

**Duration of effective protection:** 72 minutes (No Failure)

**Test House:** Chiltern International Fire

**Integrity reached:** 60 minutes (No Failure)

**Insulation Reached:** 60 minutes (No Failure)

**Test House:** BRE



## FireHalt® Fire Protection Products

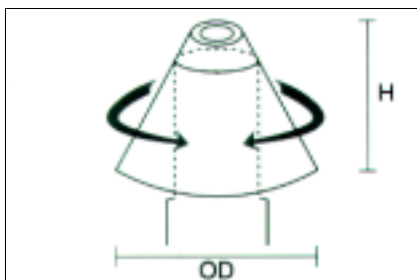
### Downlighter Covers

## Fitting Instructions

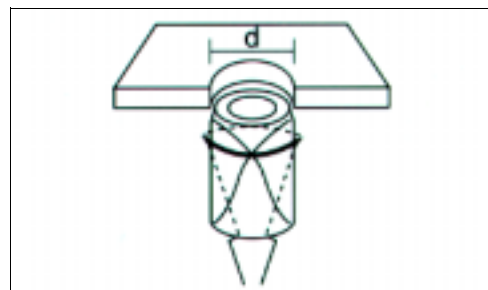
FireHalt® Downlighter covers have been developed to provide maximum protection for holes created by the introduction of a downlighter and to allow for ease of fitting. In a fire situation, the cover expands internally to fill all the available space with a fire resistant, highly insulating char.

The fire is unable to penetrate the hole and the cover gives additional insulation protection to the ceiling void by reducing the possibility of heat build up and ignition of flammables, such as accumulated dust and insulation.

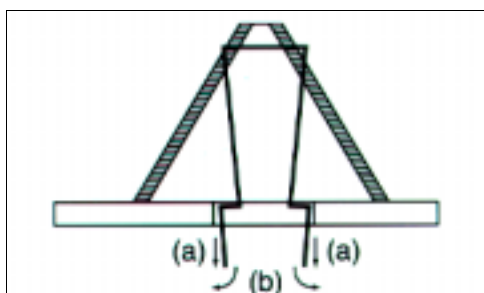
Sizes Available		
O/D	Height	Cut-out Size
150	150	50 to 75
200	200	75 to 100
250	250	100 to 140



**Step One:** Grasp legs firmly and roll the cover into a cylinder. Ensure the wiring loom is through the slot provide before installation



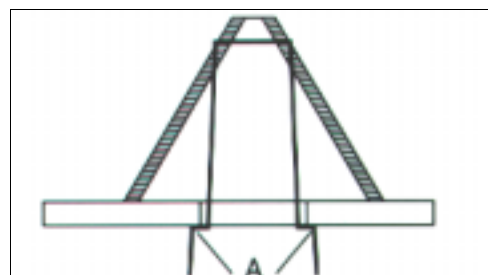
**Step Two:** Keeping a tight grip on the legs, feed the cover through the cut out made for the downlighter.



**Step Three:** Ensure cover has sprung back into its original cone shape.

(a) Grasp legs and pull down until L section clears the underside of the ceiling  
(b) Move legs out until vertical part of L section is flush with the side of the cut out

**Step Four:** (a) Release legs so that they grip the underside of the tile.  
(b) Remove the excess from both legs, cut at point A. For double layers of plasterboard or ceilings thicker than 15mm the cut legs can be pushed between sheets or into ceiling tiles or plasterboard.



*NB. The transformer should be fitted outside the cover*